

**STANDARD SPECIFICATIONS  
(MANUFACTURE)**

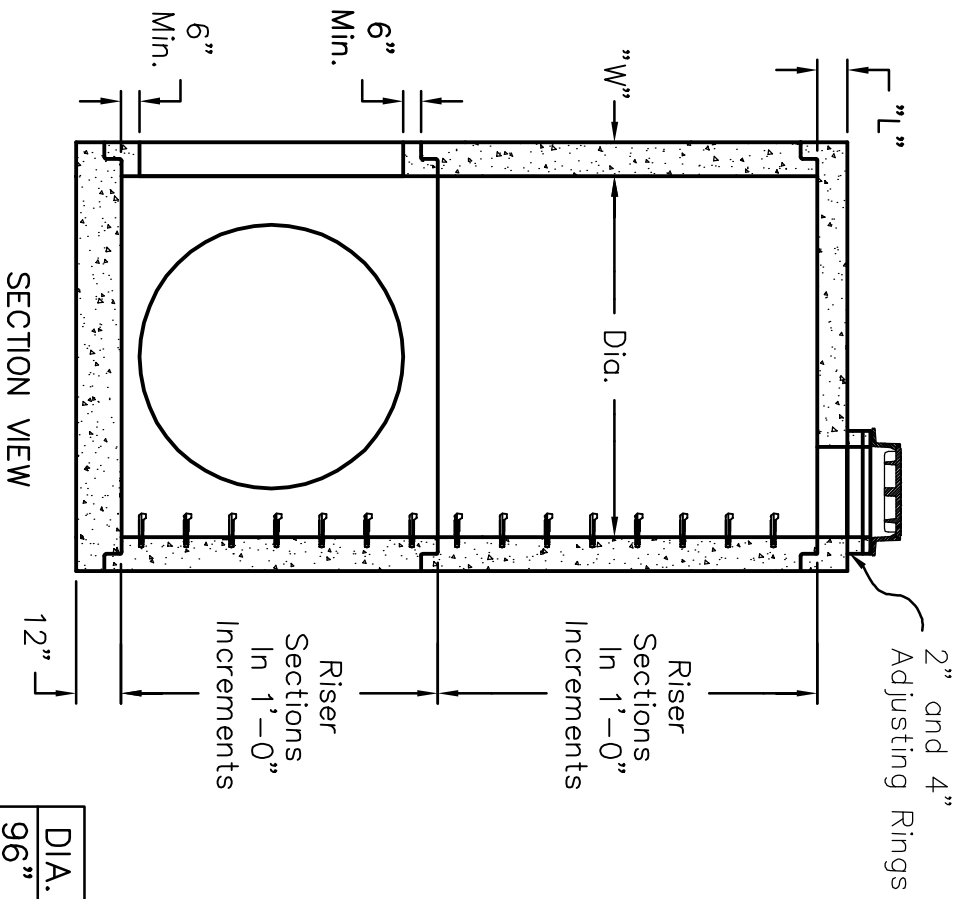
- ASTM C-478
- AASHTO M-199

**JOINT SPECIFICATIONS  
(RUBBER GASKET)**

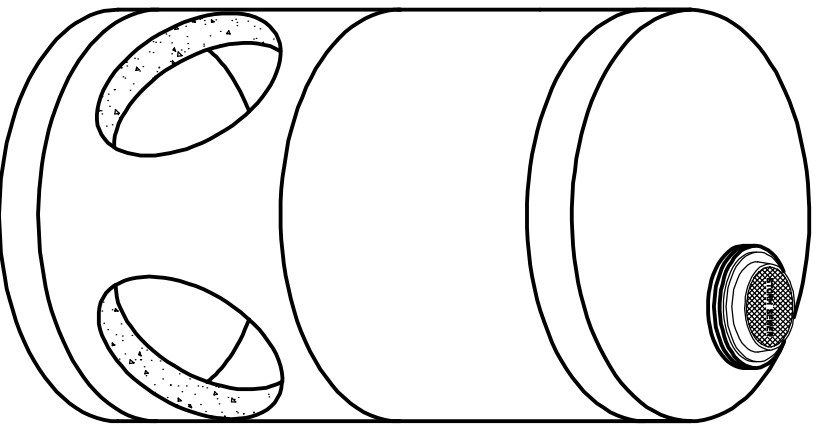
- ASTM C-443
- AASHTO M-315

**JOINT SPECIFICATIONS  
(FLEXIBLE SEALANT)**

- ASTM C-990
- AASHTO M-198-B



DIA.	"W"	"L"
96"	9"	8"
120"	10"	12"
144"	12"	12"



- ECCENTRIC CONCRETE LID SHOWN, CONCENTRIC CONCRETE LID AVAILABLE UPON REQUEST.
- STEPS, RING & COVER, AND KNOCKOUTS OPTIONAL.
- BASE SLAB IS SEPARATE FROM RISER SECTION.
- RISERS AVAILABLE UP TO 8'-0" MAXIMUM HEIGHT.
- A MINIMUM OF 12" IS SUGGESTED FOR CONCRETE SUPPORT BETWEEN KNOCKOUTS AND/OR MANHOLE JOINT. MAXIMUM KNOCKOUT SIZE IS 64" DIAMETER.
- PLEASE CALL FOR SPECIAL APPLICATIONS.



725 BRYAN STOCK TRAIL,  
CASPER, WYOMING 82609  
Phone: (307)265-3100  
Fax: (307)265-0013

BY MDB | DATE: 2-17-09 | SCALE: NONE  
**96"-144" DIA. STORM  
 SEWER MANHOLE**