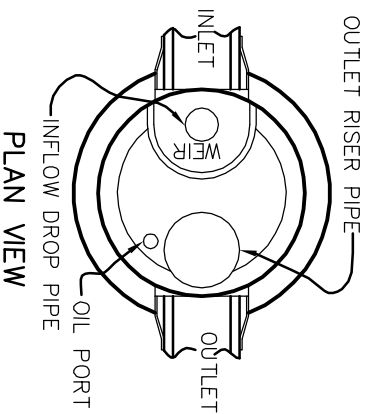
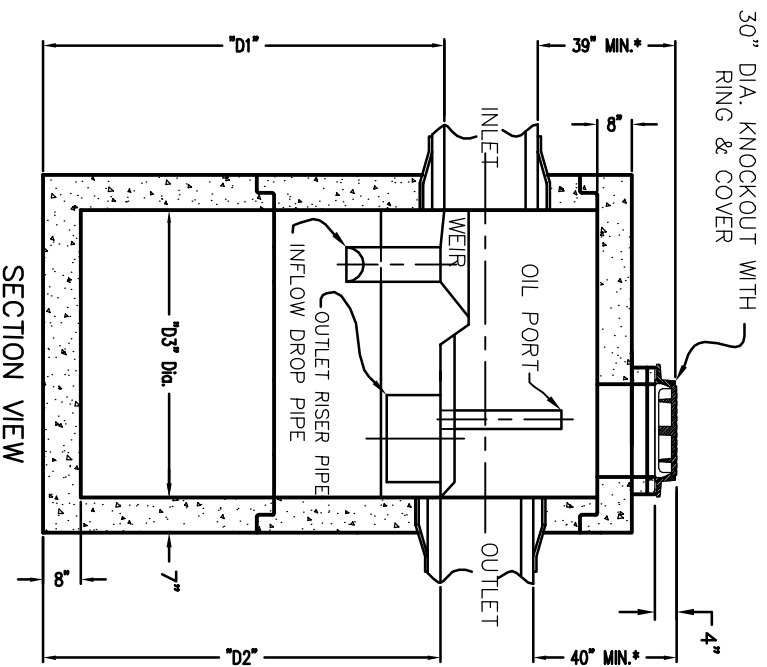


**STANDARD SPECIFICATIONS
(MANUFACTURE)**

- ASTM C-478
- AASHTO M-199

**JOINT SPECIFICATIONS
(RUBBER GASKET)**

- ASTM C-443
- AASHTO M-315



VARIABLE DIMENSIONS

MODEL	"D1"	"D2"	"D3"
STC 450	69"	68"	48"
STC 900	63"	62"	72"
STC 1200	79"	78"	72"
STC 1800	125"	124"	72"

24" KNOCKOUT WITH D&L A-1071 RING & COVER

- PROTECTED BY ONE OR MORE OF THE FOLLOWING U.S. PATENTS: 4,985,148 & 5,498,331 & 5,725,760 & 5,849,181 & 5,753,115 & 6,068,765
- STORMCEPTOR IS CONFINED SPACE ENTRY, SUPPLIED WITH STEPS ONLY BY REQUEST
- CONNECTIONS SHOWN WITH FLEXIBLE CONNECTOR FOR SMOOTH EXTERIOR PIPE ONLY. BOOTS NOT AVAILABLE FOR ALL SIZES AND TYPES. PIPE MAY BE GROUTED BY PURCHASER
- RING & COVER TO BE D&L SUPPLY A-1366
- DESIGNED FOR HS20 LOADING
- FOR LESS THAN MINIMUM, CONTACT MANUFACTURER. ADDITIONAL ACCESS IS SUGGESTED
- SCALE: NONE



725 BRYAN STOCK TRAIL
CASPER, WYOMING 8260
Phone: (307)265-3100
Fax: (307)265-0013

DRAWN BY: MDB
DATE: 2-23-09
IN-LINE STORMCEPTOR
(MODEL NOS. 450 - 1800)