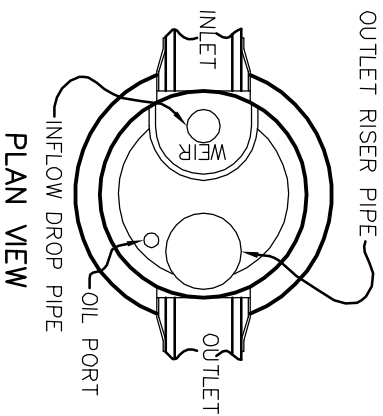
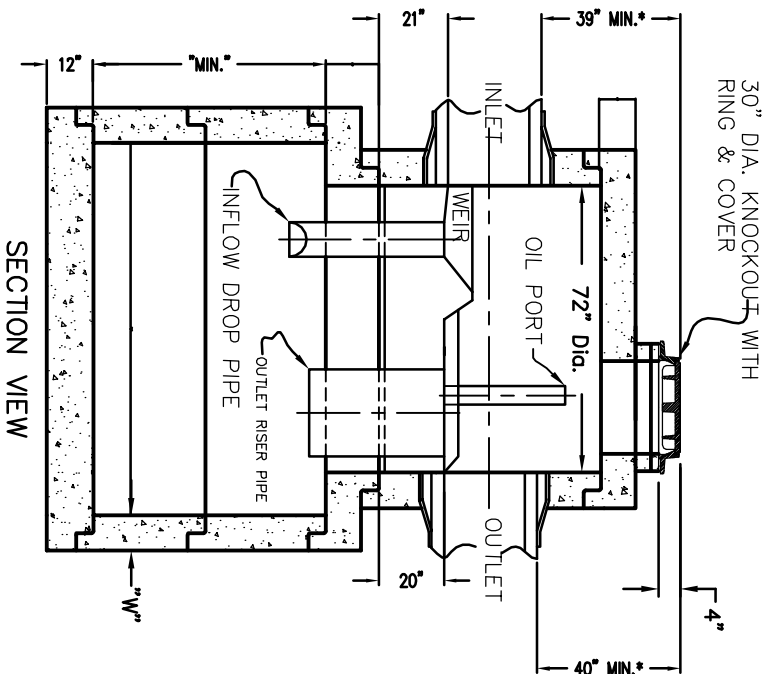


**STANDARD SPECIFICATIONS
(MANUFACTURE)**

- ASTM C-478
- AASHTO M-199

**JOINT SPECIFICATIONS
(RUBBER GASKET)**

- ASTM C-443
- AASHTO M-315



VARIABLE DIMENSIONS

MODEL	"DIA."	"MIN."	"W"
STC 2400	96"	60"	9"
STC 3600	96"	108"	9"
STC 4800	120"	96"	10"
STC 6000	120"	108"	10"
STC 7200	144"	96"	12"

- PROTECTED BY ONE OR MORE OF THE FOLLOWING U.S. PATENTS: 4,985,148 & 5,498,331 & 5,725,760 & 5,849,181 & 5,753,115 & 6,068,765
- STORMCEPTOR IS CONFINED SPACE ENTRY, SUPPLIED WITH STEPS ONLY BY REQUEST
- CONNECTIONS SHOWN WITH FLEXIBLE CONNECTOR FOR SMOOTH EXTERIOR PIPE ONLY. BOOTS NOT AVAILABLE FOR ALL SIZES AND TYPES. PIPE MAY BE GROUTED BY PURCHASER
- RING & COVER TO BE D&L SUPPLY A-1366
- DESIGNED FOR HS20 LOADING
- FOR LESS THAN MINIMUM, CONTACT MANUFACTURER. ADDITIONAL 24" ACCESS OVER INFLOW DROP PIPE IS SUGGESTED
- SCALE: NONE



725 BRYAN STOCK TRAIL
 CASPER, WYOMING 8260
 Phone: (307)265-3100
 Fax: (307)265-0013

DRAWN BY: MDB
 DATE: 2-23-09
IN-LINE STORMCEPTOR
 (MODEL NOS. 2400 - 7200)