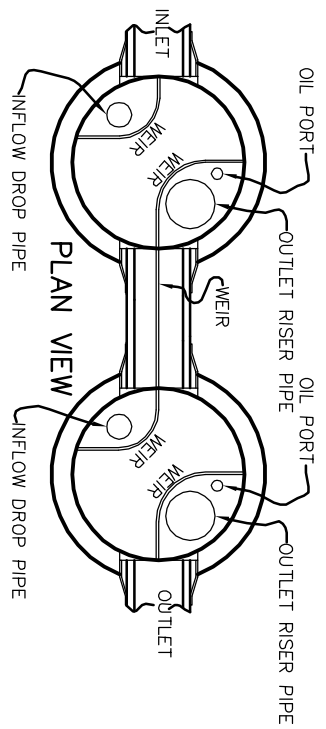
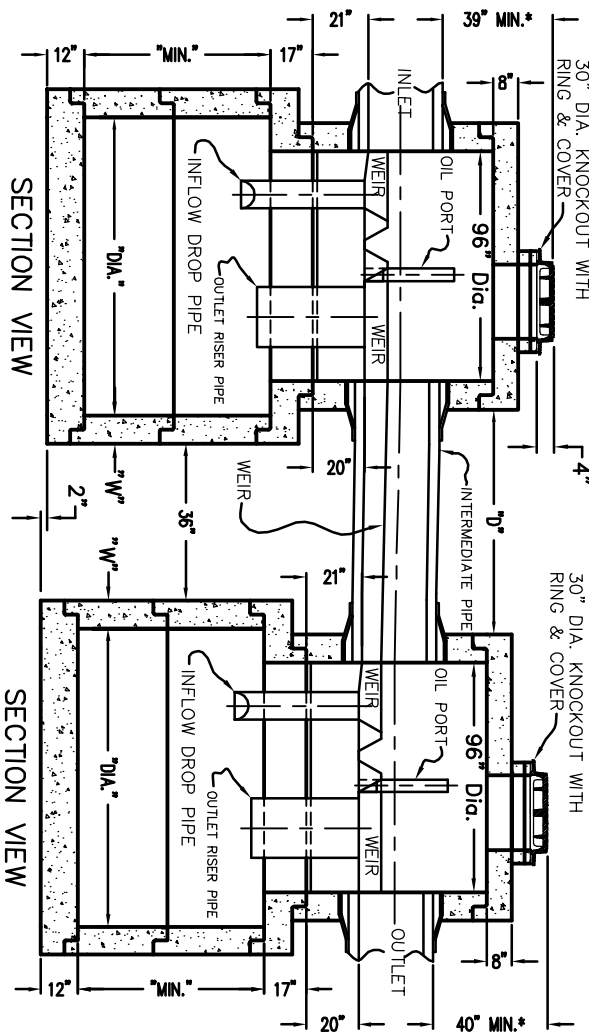


**STANDARD SPECIFICATIONS
(MANUFACTURE)**

- ASTM C-478
- AASHTO M-199

**JOINT SPECIFICATIONS
(RUBBER GASKET)**

- ASTM C-443
- AASHTO M-315



VARIABLE DIMENSIONS

MODEL	"DIA."	"MIN."	"W"	"D"
STC 11000	120"	96"	10"	62"
STC 13000	120"	108"	10"	62"
STC 16000	144"	96"	12"	90"

- PROTECTED BY ONE OR MORE OF THE FOLLOWING U.S. PATENTS: 4,985,148 & 5,498,331 & 5,725,760 & 5,849,181 & 5,753,115 & 6,068,765
- STORMCEPTOR IS CONFINED SPACE ENTRY, SUPPLIED WITH STEPS ONLY BY REQUEST
- CONNECTIONS SHOWN WITH FLEXIBLE CONNECTOR FOR SMOOTH EXTERIOR PIPE ONLY.
- BOOTS NOT AVAILABLE FOR ALL SIZES AND TYPES. PIPE MAY BE GROUDED BY PURCHASER
- RING & COVER TO BE D&L SUPPLY A-1366
- DESIGNED FOR HS20 LOADING
- FOR LESS THAN MINIMUM, CONTACT MANUFACTURER. ADDITIONAL 24" ACCESS OVER INFLOW DROP PIPE IS SUGGESTED
- SCALE: NONE



725 BRYAN STOCK TRAIL
 CASPER, WYOMING 8260
 Phone: (307)265-3100
 Fax: (307)265-0013

DRAWN BY: MDB
 DATE: 2-23-09
SERIES STORMCEPTOR
 (MODEL NOS. 11000-16000)